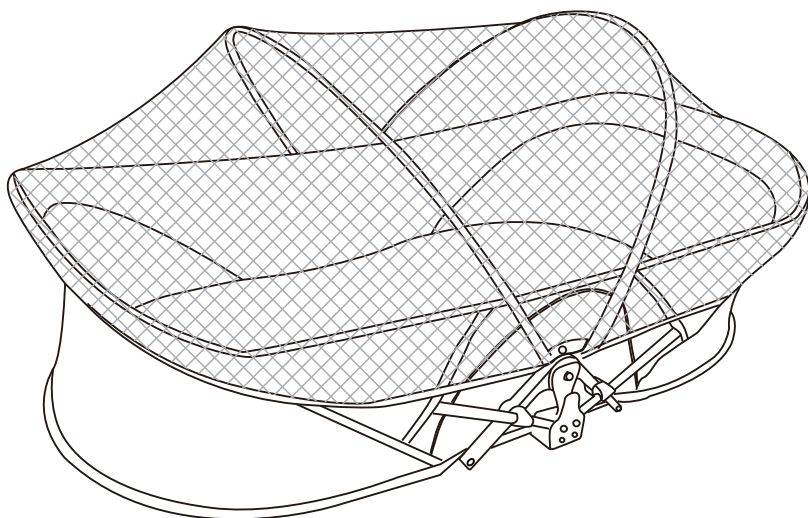


IMPORTANT! KEEP FOR FUTURE REFERENCE



USER GUIDE

Easy Sleep Portable Crib



THE PICTURE IS FOR REFERENCE ONLY, PLEASE REFER TO THE ACTUAL PRODUCT.

IMPORTANT!

- READ ALL INSTRUCTIONS BEFORE ASSEMBLING AND USING THE PRODUCT.
- THIS PRODUCT IS INTENDED FOR USE ON A FLAT, HORIZONTAL, SMOOTH AND HARD SURFACE ONLY. DO NOT PLACE PRODUCT ON A GRADIENT (SLANTING) SURFACE. FAILURE TO USE THE PRODUCT ON THE CORRECT SURFACE CAN RESULT IN DAMAGE TO THE PRODUCT, THE OPENING MECHANISM, AND BE UNSAFE FOR YOUR BABY.

THE SCOPE OF APPLICATION

- THIS PRODUCT IS PRIMARILY USED FOR AN INFANT UP TO ROLLING STAGE

NOTES OF USAGE

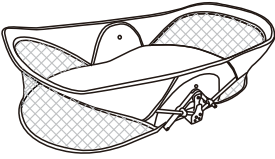
- THE PRODUCT SHALL BE OPENED ON A FLAT, SMOOTH AND HARD SURFACE, OTHERWISE, IT WILL CAUSE FAILURE IN OPEN OR DAMAGE TO THE PRODUCT. IT SHALL BE USED ON A HORIZONTAL SURFACE.
- YOUNG CHILDREN SHOULD NOT BE ALLOWED TO PLAY UNSUPERVISED IN THE VICINITY OF THE PRODUCTS.
- KEEP AWAY FROM FIRE AND HEAT SOURCES.

MAINTENANCE AND CARE

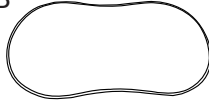
- CHECK INSTRUCTION MANUAL FOR A LIST OF REQUIRED PARTS. PERIODICALLY CHECK PRODUCT FOR LOOSE, DAMAGED, OR MISSING PARTS.
- DO NOT USE PORTABLE CRIB IF ANY PARTS ARE MISSING, DAMAGED, OR BROKEN. CONTACT FOR REPLACEMENT PARTS AND INSTRUCTIONAL LITERATURE IF NEEDED. DO NOT SUBSTITUTE PARTS.
- FABRIC COVER IS ONLY FOR HAND WASH AND AIR-DRY. (MACHINE WASH IS NOT ALLOWED.)

Components

A



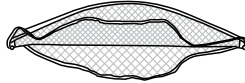
B



C



D



A. Portable Crib

B. Mattress

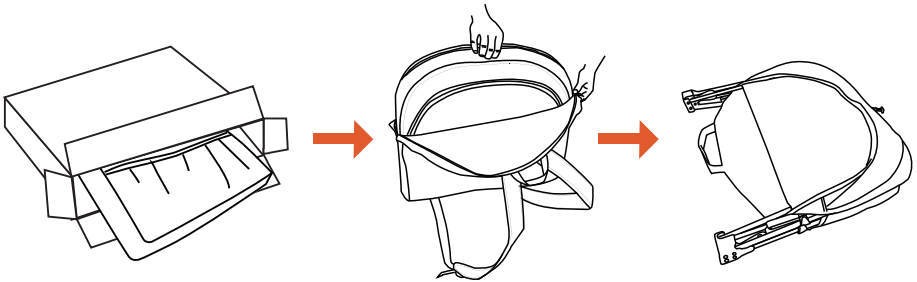
C. Instruction Manual

D. Mosquito Net

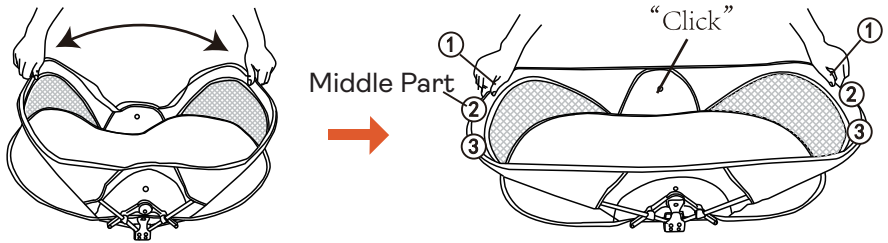
Usage Method

Open the Crib

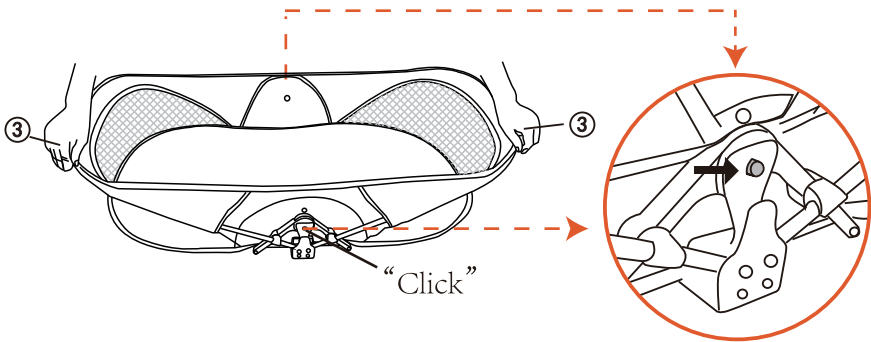
1. Take the crib out from the carton.



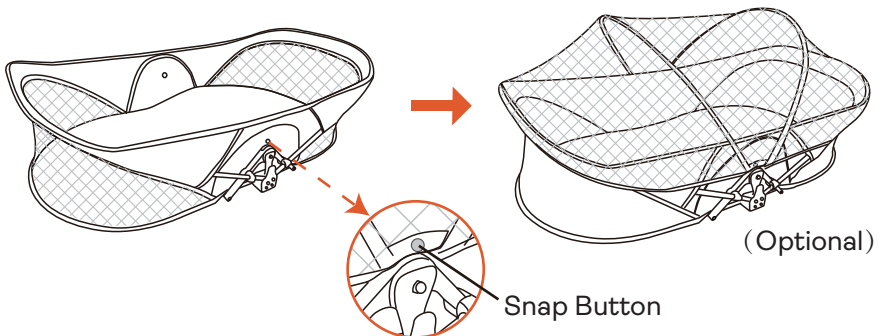
2. Place the product on a flat, smooth and hard surface. Push the metal support tubes outward. Put hands on positions ① to press downward, until the buckle locks in place with the hook on one side.



3. Repeat the same steps on positions ③ for the other side. Make sure buckles lock in place with the hooks on both sides.

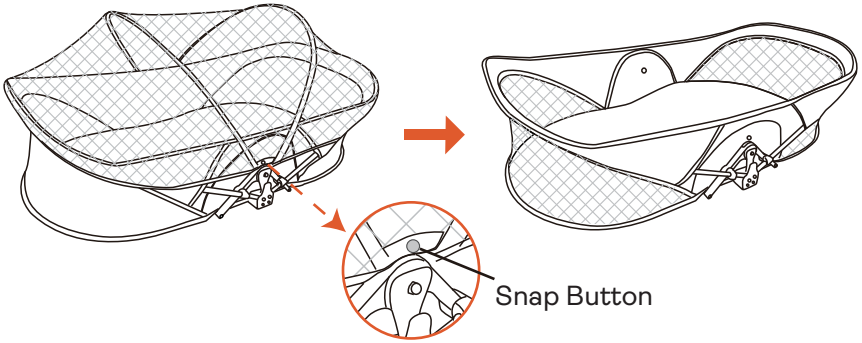


4. Fasten the snap buttons of the mosquito net on the crib correspondingly. Cover the mosquito net on top of the crib.

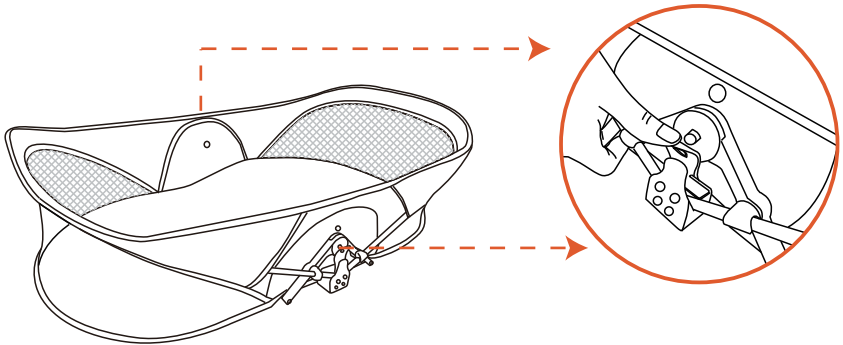


Fold the Crib

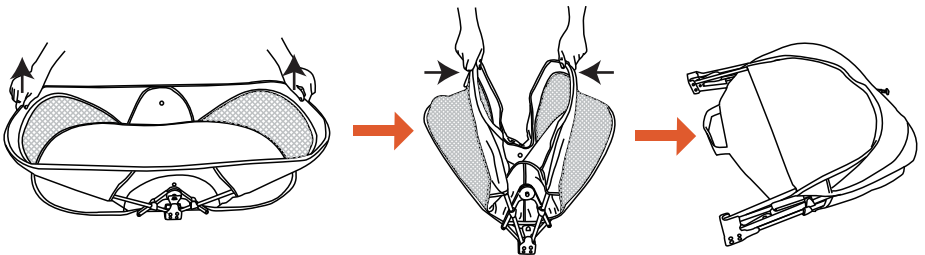
1. Unfasten the snap buttons on both sides of the crib, remove the mosquito net.



2. Simultaneously pull the buckles outward on both sides of the crib.



3. Fold the crib until the two metal support tubes touch and fold flat.



⚠ WARNING

FAILURE TO FOLLOW THESE WARNINGS AND THE INSTRUCTIONS COULD RESULT IN SERIOUS INJURY OR DEATH.

SUFFOCATION HAZARD

Infants have suffocated:

- IN GAPS BETWEEN EXTRA PADDING AND SIDE OF THIS PRODUCT, AND ON SOFT BEDDING.
- USE ONLY THE PAD PROVIDED BY MANUFACTURER. NEVER ADD A PILLOW, COMFORTER, OR ANOTHER MATTRESS FOR PADDING.
- TO REDUCE THE RISK OF SUDDEN INFANT DEATHS SYNDROME (SIDS), PEDIATRICIANS RECOMMEND HEALTHY INFANTS BE PLACED ON THEIR BACK TO SLEEP, UNLESS OTHERWISE ADVISED BY YOUR PHYSICIAN.
- STRINGS CAN CAUSE STRANGULATION! DO NOT PLACE ITEMS WITH A STRING AROUND A CHILD'S NECK, SUCH AS HOOD STRINGS OR PACIFIER CORDS. DO NOT SUSPEND STRINGS OVER A CRIB OR ATTACH STRINGS TO TOYS.
- DO NOT USE TRAVEL CRIB IF ANY PARTS ARE MISSING, DAMAGED, OR BROKEN. CONTACT FOR REPLACEMENT PARTS AND INSTRUCTIONAL LITERATURE IF NEEDED. DO NOT SUBSTITUTE PARTS.
- CHECK INSTRUCTION MANUAL FOR A LIST OF REQUIRED PARTS. PERIODICALLY CHECK PRODUCT FOR LOOSE, DAMAGED, OR MISSING PARTS.

FALL HAZARD

- DON'T LIFT THE CRIB WHEN A BABY IS INSIDE IT.
- TO HELP PREVENT FALLS, DO NOT USE THIS PRODUCT WHEN THE INFANT BEGINS TO ROLL OR HAS REACHED MANUFACTURER'S RECOMMENDED MAXIMUM WEIGHT OF 9 KGS, WHICHEVER COMES FIRST.
- IF A SHEET IS USED WITH THE PAD, USE ONLY THE ONE PROVIDED BY THE PORTABLE CRIB MANUFACTURER OR ONE SPECIFICALLY DESIGNED TO FIT THE DIMENSION OF THIS PRODUCT MATTRESS.
- THIS PRODUCT IS DESIGNED TO PROVIDE A SLEEPING AREA FOR AN INFANT UNTIL HE OR SHE BEGINS TO ROLL, MOVE YOUR CHILD TO ANOTHER SLEEPING PRODUCT WHEN YOUR CHILD REACHES THIS STAGE.

Item Description: Portable Crib with Mattress

Item No: EPPB-BEIGE

The Scope of Application: This portable crib is intended to provide sleeping accommodation for an infant up to the rolling stage or a maximum weight of 9kgs.

n.w: 4.07lbs g.w: 4.84lbs

Made in China: Zhongshan City Bellers Daily Products Co., Ltd.

Address: Building 1-1, No.10, Chongzhang Road, West District, Zhongshan City, Guangdong Province, P. R. China

Product Standard: ASTM F2194-16 § 1 + 16CFR 1218 (Excluding Clause 6.4)

Service Hotline: ergoPouch, 101, 15 Corporate Dr, Heatherton 3204 VIC Australia

PH: +61 3 9551 6421 email: cs@ergopouch.com.au

Main Components: Steel, Polypropylene, Nylon, Polyester